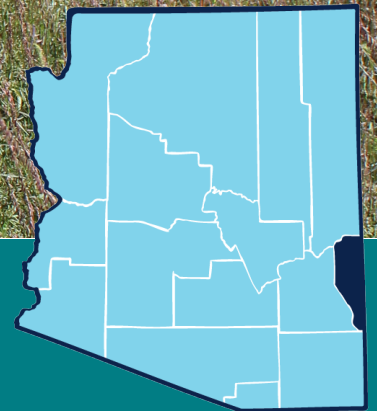




# Cooperative Extension

Greenlee County



ANNUAL REPORT 2025

# Greenlee County Cooperative Extension

*Engaging with people through applied research and education to improve lives, families, communities, the environment and economies in Arizona and beyond.*

# Greenlee County Cooperative Extension

## 2025 Annual Report



### Contents

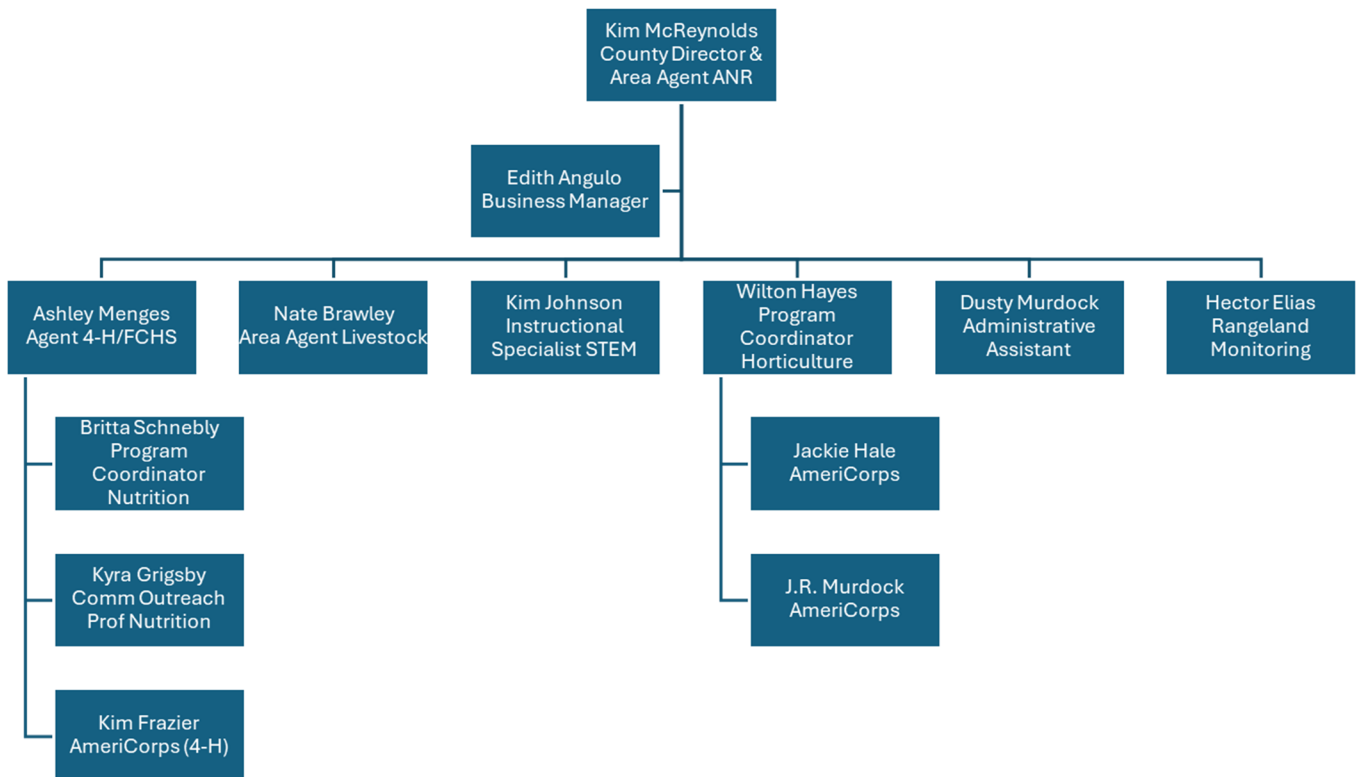
Cooperative Extension . . . . .	2	4-H . . . . .	8
Extension Advisory Board . . . . .	3	STEM . . . . .	10
Ag & Natural Resources . . . . .	4	Family, Consumer & Health Sciences . . .	11
Horticulture . . . . .	5	Nutrition . . . . .	12
Natural Resources . . . . .	6	Faculty/Staff List . . . . .	14
Youth Development . . . . .	7		

# Greenlee County Cooperative Extension Organization

Greenlee County Cooperative Extension is an Extension Unit of the University of Arizona housed under the College of Agriculture, Life and Environmental Sciences. We are located in the Greenlee County South Annex Building in Duncan.



2025 Greenlee County Cooperative Extension Organization Chart



---

# Greenlee County Cooperative Extension Advisory Board

Per ARS Title 3, the Greenlee County Board of Supervisors appoints our Greenlee County Cooperative Extension Advisory Board members. Our Advisory Board meets three times a year. They provide essential input to help us achieve our program goals. Per University of Arizona guidance, external advisory boards are not governing bodies, but they do provide direction, and help build networks and partnerships for our programs.

<b>Members</b>	<b>Term Expires</b>
Bill Cook	6/30/2026
Suzanne Cuthbertson	6/30/2026
Frank Downs, Chair	6/30/2027
Marcy Harris	6/30/2026
Shanna Holguin	6/30/2026
Martha Lujan	6/30/2026
Dean Lunt	6/30/2027
Sam Lunt	6/30/2027
Jeff Menges	6/30/2026
Michele Najjar	6/30/2026
Tom Powers, Vice Chair	6/30/2027
Matt Reynolds	6/30/2027

### **Retiring Members**

Sabrina Dumas



## Agriculture and Natural Resources

Agriculture and Natural Resource Agents and Staff deliver research-based information to stakeholders and producers in Natural Resources, Noxious Weeds, Rangeland Management, Livestock, and Horticulture.





## Horticulture

The Horticulture program helps to educate participants on a wide variety of horticultural topics including tree pruning, plant selection, pest identification, watering and irrigation systems, and general horticultural concerns.

In 2025, **14 garden-related workshops** were conducted, serving **116 youth and adult** participants.

- 6 regular Gardening topics.
- 4 Seed Saving for Duncan High School students.
- 2 Grafting and Propagation for Duncan Junior High students.
- 1 Seed Saving and 1 Basic Gardening at the Clifton Library.

AmeriCorps members assisted with planting, growing, weeding, and harvesting of selected plants for seed saving. They helped in the greenhouse and garden beds where the following were grown: watermelons, cantaloupe, 2 varieties of asparagus, 6 varieties of tomatoes, and 7

varieties of chili peppers. AmeriCorps members manage the local seed libraries. In 2025 the two seed libraries checked out a total of over **1,000 packets of garden seeds** to local citizens. They also assisted with teaching **students who cleaned over 1,500 packets** of seeds for future stock. Manning Earth Day booths in both Duncan and Morenci, over **300 packets of flower garden seeds** were given out.

Additional program accomplishments:

- **121 volunteer hours** were recorded by adults and youth **valued at \$4,078**.
- Assisted Duncan High School with the completion of a greenhouse water system and shade cloth.
- The UACE Greenlee YouTube Channel had **100,733 views of gardening videos** in 2025.
- **145 students in Pre-K through 3rd grade** attended the Pumpkin Patch Field Trip at the Extension office. Stations covered pumpkin nutrition, botany, pollinators, and math, and picked their own pumpkin.



**Wilton Hayes, Horticulture Program Coordinator** focuses on educating home gardeners and youth in Greenlee County, and maintaining the demonstration gardens and greenhouse at the Extension office. He is assisted by AmeriCorps members Jackie Hale and J.R. Murdock.



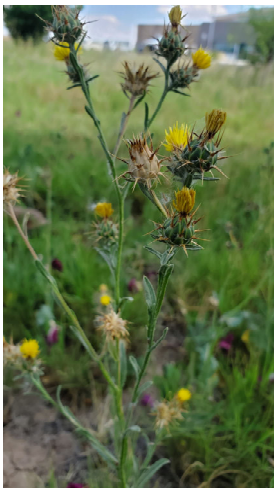
## Natural Resources

### Noxious Weeds

The spread of state and federally listed noxious weeds on public, state trust, and private lands threatens biodiversity and native plant species, decreases forage and habitat for domestic and wild animals, and causes economic hardship for landowners. Invasive species in the United States are estimated to cause damages of \$137 billion annually, with non-native invasive weeds making up \$34 billion of that amount (Montana State University, Extension Agricultural Economics).

**1 Noxious Weed Workshop** was held in Duncan with 7 participants. Topics included the biology and control of target species, how to read herbicide labels, and a surfactant demonstration.

Work continues on field trials to evaluate the efficacy of herbicides for the grant **“Control of Sandbur Grass in Pastures Along the Gila River.” (\$18,259)**



### Rangeland Management

Rangelands are important to society for the goods and services they produce and for the ecological services they provide (Society for Range Management). There is a need to balance livestock grazing with natural resources.

**Mexican Gray Wolf Data Gathering Workshop**, 1/28, Duncan, 10 participants. With G. Frisvold and D. Duval.

**Greenlee County Cattle Growers’ Winter Meeting**, 3/1, Menges Ranch, 20 participants. I gave a report of the status of long term Bureau of Land Management rangeland monitoring data.

A network exists of **remotely located rangeland rain gauges** at monitoring and other sites. 8 rain gauges are read at least twice a year and entered into the UA MyRaingeLog website.

**Greenlee County Cattle Growers’ Summer Meeting**, 8/23, Blue, 32 participants. I presented data from 3 remotely placed rain gauges in the county with reports generated from myRAINgelog and instructed people on how they can use these reports.

As part of the **Rangeland Monitoring & Inventory Program**, monitoring took place on Clifton Ranger District allotments were monitored. Monitoring reports were prepared for each allotment and given to agencies and ranchers.

**Kim McReynolds, Agriculture & Natural Resources Area Agent** works with private landowners and local, state, and federal governments to address agricultural and natural resource issues in the county. **Hector Elias, Research Specialist** works on the Rangeland Monitoring program with the Clifton Ranger District.



## Youth Development

Greenlee County 4-H creates developmental experiences for youth so that they become resilient, competent, and contributing citizens of our communities. Our program serves youth ages 5 to 18 through participation in clubs, specific project areas, educational and social events, service, and career exploration. Competitive opportunities arise at a county, state, and national level. The 4-H program is delivered through the traditional club program model as well as through in school programming.

Greenlee County Cooperative Extension offers STEM (Science, Technology, Engineering, and Mathematics) programming for students and other youth in partnership with Morenci Unified Schools and the Clifton and Duncan Libraries.





## 4-H Youth Development

Greenlee County 4-H youth report that through hands-on projects they have developed responsibility, accountability, and have learned the importance of follow-through. Understanding the strong importance that agriculture has on Greenlee County, the 4-H program provides an opportunity for youth to learn about livestock care, proper animal husbandry skills, and how important agriculture is to sustaining rural communities. The 4-H program offers projects outside of agriculture that allow youth to explore new interests and become inspired for future educational or career paths.

**4-H Enrollment was up with a total of 77 youth.** 4-H has continued to grow as the community shows more interest in programs offered.

**93% of youth** who participated in state of national 4-H travel experiences reported learning about a new educational or career opportunity during their trip.

One Greenlee County youth member represented Arizona at a National 4-H event. The Livestock Judging program has proven to prepare youth to successfully showcase their skills beyond the local level.

One Greenlee 4-H member earned title of High Arizona 4-H Senior Individual at the Arizona National Livestock show. The judging program allows youth to strengthen their skills in livestock evaluation, decision-making, and communication.

Participation in the Greenlee County Fair significantly increased:

**44% of youth showing Large Stock** were active 4-H members.

**79% of youth showing Small Stock** were active 4-H members.

4-H youth submitted **over 100 indoor exhibit entries**, showcasing a wide range of project areas.

Each 4-H member exhibiting at the county fair is required to present a demonstration. In 2025, **52 members delivered demonstrations** in front of peers, volunteers, parents, and community members.

Community service is a core component of the Greenlee County 4-H program. Every enrolled member is required to participate, allowing youth to strengthen their understanding of civic responsibility and leadership. **Over 400 hours of community service work was completed**, including, but not limited to, serving the community at the two county food banks and working on improvements at the County Fairgrounds.

From this community work, year-end evaluations showed that 4-H members are more likely to identify ways to meet the needs of their community, reinforcing civic engagement and problem-solving skills.

**Ashley Menges, 4-H Youth Development Agent** focuses on growing the 4-H program in Greenlee County, creating fun and engaging Youth Development programming, and recruiting volunteers to “Make the Best Better.” AmeriCorps Member Kim Frazier assists in 4-H programming.

A Greenlee County 4-H member received one of the Arizona 4-H Scholarships to support her post-secondary education. The scholarship program reinforces workforce and career readiness.

The Greenlee County 4-H Youth Development Program directly supports the county's long-term success by investing in local youth, strengthening agriculture, and building a skilled future workforce. 4-H provides structured, research-based programming that helps youth develop leadership, communication, responsibility, and career readiness.

By maintaining a strong focus on agriculture, 4-H helps preserve Greenlee County's agricultural heritage while preparing the next generation of producers, professionals, and community leaders. Youth participation and leadership at the county, state, and national levels demonstrate the program's return on investment and its ability to positively represent Greenlee County beyond its borders.





## STEM

Fostering a spirit of innovation, STEM education encourages children to think creatively. Integrating STEM into elementary curricula provides students with essential skills for success in a rapidly evolving world. They develop problem-solving abilities, learn to experiment, and cultivate the creative solutions that drive innovation. This early exposure builds a strong foundation in science, technology, engineering, and mathematics, igniting interest and preparing students for modern professional demands.

In 2025, **123 Metcalf 4th grade youth** participated in **12 separate hands-on STEM activities**. These activities included Animal Adaptations, Rock Cycle, Electromagnetism, Natural Disasters, Water Festival, Seismic Waves, Energy Transfer, Earth's Systems, Weather and Climate, Hurricane Towers, and Watersheds. During a

half-day outdoor water festival, students learn about our shared water supply, a brief history of water use in Arizona, and about the journey of water molecules across the globe. The goal of the activities was to supplement and support the school's curriculum designed to meet the state science standard in that subject.

**19 Duncan youth**, ages 3-12, and **18 Clifton youth** ages 3-12, participated in a **summer engineering focused activity** at the Duncan Public Library and the Clifton Public Library, respectively, building and competing with assorted (age appropriate) Stomp Rockets. They learned the concepts of trajectory, balance, force, lift, and other physics principles to make their rockets fly high and straight, hitting targets or going longer distances.



**Kim Johnson, Instructional Specialist, Sr.** focuses on providing hands-on STEM lessons for 4th grade students in the Morenci School District. She also provides STEM Camps during school breaks at the Clifton and Duncan Libraries.



## Family, Consumer and Health Sciences

Greenlee County Cooperative Extension's Family, Consumer and Health Sciences programs help build strong families, strong minds, and strong bodies. The Nutrition program provides nutrition lessons to school children along with physical exercise.





## Nutrition Education

### 5th Grade Garden Club and Kindergarten Peanut Project

The 2024-25 5th Grade Garden Club at Duncan Elementary School was year two for the program. After a school year of hands-on experiences in the garden, introducing the club members to a variety of gardening equipment, plus learning how care for and maintain a garden, the program culminated with the 5th Grade Garden Club members assisting the kindergarten class in transplanting their peanut plants into the school garden. This has proven to be a highlight among the garden club members and is considered one of their favorite activities. In reviewing the activity with the 2024-25 5th Grade students, they said that that peanut transplanting was one of their favorite gardening activities of the past year.

During the past two years of the Garden Club program members aiding the kindergarten with their peanut transplants, we've seen siblings helping siblings, friends helping friends, and new friends being made. Kailey Sexton (former 5th grade teacher) stated that "the kindergarteners love when the big kids come and work with them. It builds a big sense of community." The 5th grade and kindergarten peanut planting activity strengthens the relationship between students in the school and is an asset for the both the 5th graders and kindergarteners in their nutrition and gardening journey.

### Summer 2025 Kids' Cooking

Each summer, a vegetable is chosen as the highlighted vegetable or the vegetable of focus and the recipes incorporate that particular vegetable. The Kids' Cooking Day Camps increase the participants' knowledge about nutrition and cooking, while also improving their fine-motor skills as they learn proper cutting techniques and measuring ingredients.

For 2025, the participants were introduced to butternut squash, and increased their knowledge about beta-carotene rich vegetables, as well as several way to prepare the vegetable.

The participants made arepas (South American corn cake patties), filled with a butternut hash. They made a butternut hummus to eat with fresh vegetables they had cut. However, the favorite activity from each of the sessions occurred when they made pasta from scratch, along with a butternut pasta sauce. The participants delighted in rolling out the dough, observing what shapes they made as they did so, and competed to see who could roll theirs out the thinnest.



The main concept for the Cooking Day camps is for the participants to take what they learned and incorporate those newfound skills into their homes and increase their willingness to participate in cooking at home, as well as develop a healthy relationship with food. One mother of one of the participants, took and sent a picture of her daughter making the pasta at home for her family. This feedback was a testament that the participants are taking the skills they learned at the Cooking Day Camps and using them with their families.

**Britta Schnebly, Program Coordinator and Kyra Grigsby, Community Outreach Professional, provide educational programs in the areas of nutrition and physical activity.**

### 2025 - By the Numbers

- **3 Storytime Cooking** events, **29 youth participants** (ages 3-5)
- **20 gardening activities** at Duncan Public Schools (grades PreK-5), **176 students**, and **3 gardening activities** at Duncan Head Start, **18 students**
- **9 varieties of vegetables**, such as onions, snap peas, broccoli, cucumbers, Swiss chard, corn, peanuts, beets, carrots, and **3 varieties of edible flowers** grown at the Duncan school garden over the year
- **4.5 pounds of peanuts** harvested in Fall 2025
- **3 Kids' Cooking Summer Day Camp sessions** (7 days total), **72 youth attendees** (ages 6-12) participated throughout the course of the sessions
- **7 adult cooking/nutrition program** opportunities ("Cook/Book" formerly "Feed the Body, Feed the Mind" series, knife skills workshops, and various other hands-on workshops), **60-65 participants** (combined from all programs)



---

# Greenlee County Cooperative Extension

## Faculty & Staff List

### Contact Us

Greenlee County Cooperative Extension  
Website: <https://extension.arizona.edu/greenlee>  
Phone: 928-359-2261

### Administrative Support

Edith Angulo, Business Manager  
Dusty Murdock, Administrative Assistant

### Faculty

Nate Brawley, Asst. Agent, Livestock  
Kim McReynolds, Extension Director/Area Agent, ANR  
Ashley Menges, Assoc. Agent, 4-HYD/FCHS

### Program Staff

Hector Elias, Research Specialist, Rangeland Monitoring  
Wilton Hayes, Program Coordinator, Horticulture  
Kim Johnson, Instructional Specialist, Sr, STEM  
Britta Schnebly, Program Coordinator, Nutrition  
Kyra Grigsby, Community Outreach Professional, Nutrition

### AmeriCorps Members

Kim Fraizer, 4-HYD  
Jackie Hale, Horticulture  
J.R. Murdock, Horticulture